

AS Standards

	Commercial 95 340	Commercial 95 340 FR
Performance		
Maximum force	warp 670 N/50mm	580 N/50mm
Elongation at max. force	warp 117%	98%
Maximum force	weft 2400 N/50mm	2000 N/50mm
Elongation at max. force	weft 83%	71.5%
Breaking force	warp 990 N	930 N
Breaking force	weft 2000 N	2000 N
Tear strength	warp 184 N	194 N
Tear strength	weft 347 N	282 N
Bursting pressure	3500 kPa	3600 kPa
Bursting force	1937 N	1944 N
Fabric Properties		
Nominal Fabric Mass	340 gsm ± 20	340 gsm ± 20
Roll Specification		
Width	3m (folded)	3m (folded)
Length	40m	40m
Flammability Info		
Flammability Index - 12	Flammability Index - 12	Flammability Index - 1
Ingnitability Index - 10	Ingnitability Index - 10	Ingnitability Index - 13
Spread of Flame Index - 7	Spread of Flame Index - 7	Spread of Flame Index - 8
Heat Evolved Index - 5	Heat Evolved Index - 5	Heat Evolved Index - 3
Smoke Developed Index - 4	Smoke Developed Index - 4	Smoke Developed Index - 6

ASTM Standards

	Commercial 95 340	Commercial 95 340 FR
Performance		
Maximum force	warp 189.1 lbf	158.6 lbf
Elongation at max. force	warp 103.67%	88.7%
Maximum force	weft 462.3 lbf	412.3 lbf
Elongation at max. force	weft 63%	49%
Breaking force	warp 52.2 lbf	43 lbf
Breaking force	weft 52.2 lbf	39.6 lbf
Tear strength	422 lbf	408 lbf
Fabric Properties		
Nominal Fabric Mass	340 gsm ± 20	340 gsm ± 20
Roll Specification		
Width	9 ft. 10 in. (folded)	9 ft. 10 in. (folded)
Length	131 ft. 3 in.	131 ft. 3 in.
Flammability Info		
ASTM E84 19B Class A	ASTM E84 19B Class A	CSFM Title 19 1237.1 NFPA 701 Test Methods 1&2 ASTM E84 19B Class A



Commercial NinetyFive

340 GSM | Standard & Flame Retardant

The most trusted
HDPE shade
fabric in the
industry.



Data provided in this brochure represents typical averages from independent testing and quality assurance testing and should not be taken as a minimum specification nor as forming any contract between GALE Pacific and another party. Due to continuous product improvement, refer to the GALE Pacific Commercial Fabrics website for the latest technical performance information.

Please note, due to limitations of the printing process, colors pictured may not represent the true color.



GALE Pacific ANZ

145 Woodlands Drive,
Braeside, Victoria 3195
Australia
Toll Free: +1 800 331 521
au.cs@galepacific.com

GALE Pacific AMERICAS

5311 77 Center Drive, Suite 150,
Charlotte, NC 28217
USA
Toll Free: +1 800 560 4667
cscommercial@galepacific.com

GALE Pacific MIDDLE EAST

JAFZA 15, 6th Floor, Room 604,
Jebel Ali Free Zone, Dubai
United Arab Emirates
+971 4 881 7114
cscommercial@galepacific.com

GALE Pacific ASIA

777 Hengshan W Road,
Beilun, Ningbo, Zhejiang 315800
China
Toll Free: +1 800 331 521
au.cs@galepacific.com

GALE Pacific EUROPE

Toll Free: +1 800 560 4667
csccommercial@galepacific.com

galecommercial.com

Architectural SHADE FABRIC

Tension Structures
Awnings
Shade Sails
Car Park Structures

Commercial NinetyFive

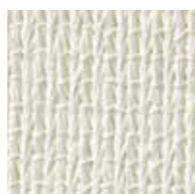
340 GSM | Standard & Flame Retardant

The cornerstone of the GALE Pacific portfolio, Commercial NinetyFive brings over 25 years of versatility, reliability, and unmatched UV protection.

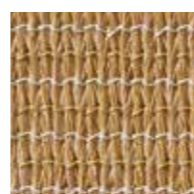
Free from lead and phthalates, Commercial NinetyFive is the first architectural shade fabric granted Oeko-Tex® 100 and Greenguard® certifications.



White
497736
495732



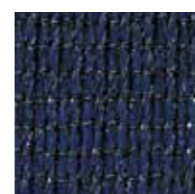
Natural
445003
495541



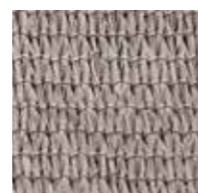
Desert Sand
444983
495565



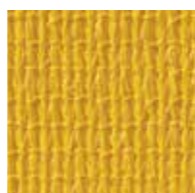
Aquatic Blue
444938
495671



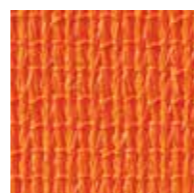
Navy Blue
445010
495602



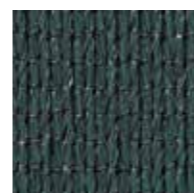
Driftwood
502294
502348



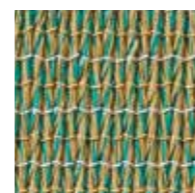
Yellow
445072
495619



Orange
459215
495633



Brunswick Green
444952
495572



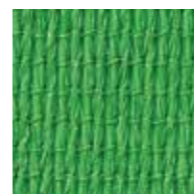
Rivergum
445027
495589



Cherry Red
444976
495695



Deep Ochre
444990
495688



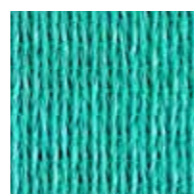
Bright Green
459208
495596



Stone
502300
502355



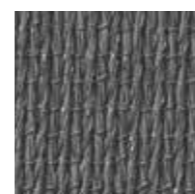
Bluebird
502263
502317



Aquamarine
502287
502331



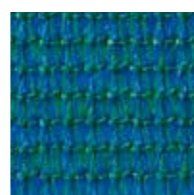
Steel Grey
445041
495718



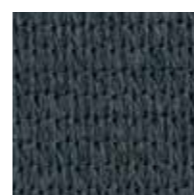
Gun Metal
455262
495527



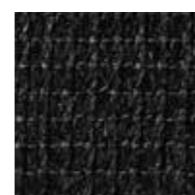
Sky Blue
445034
495626



Turquoise
445065
495664



Charcoal
444969
495558



Black
444945
495640

Expansive color assortment

Offering the most expansive color assortment of HDPE shade fabrics, Commercial NinetyFive ensures design accuracy with its precision-driven stentering process.

Effortless installation

Designed for longevity and ease, these maintenance-free shades have a best-in-class lay flat process for effortless installation.

Industry-leading UVR block

Each shade offers an industry-leading 96% UVR block with full warranties against UV degradation.

All colors meet the most tested regional flame retardancy standards, including CSFM & NFPA 701 (Methods 1 & 2), which ensures our fabrics can be used globally.